



# VACUUM BLOCK BS13-40

FOR CONSOLES OF 1 CIRCUIT HOMAG, MASTERWOOD, FELDER, WEEKE AND OTHERS

Vacuum block of one circuit with numerous options of suction areas. It offers a huge grip to the bars thanks to our patented rubber. Improved triggers that guarantee a great durability and a greater using comfort. This model takes advantage of all the **Vacuum-cnc** system.

Standard set (Base + Cup): **120 X 158 X 100 mm**

(Different heights available)

## BASES

**BS13N-40**



**MEASURES:**

120 X 158 X 40 mm

Alongside CM cups of 60 mm gives a height of 100 mm.

## CUPS



**CM15860T**  
120 x 158 x 60



**CM12060T**  
120 x 120 x 60



**CM10060T**  
120 x 100 x 60



**CM08060N**  
120 x 80 x 60



**CM07060N**  
120 x 70 x 60



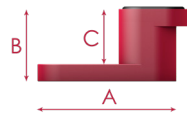
**CM06060N**  
120 x 60 x 60



**CM05060N**  
120 x 50 x 60



**CM04060N**  
120 x 40 x 60

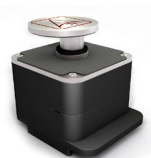


A: 145 B: 60 C: 45

\*(Possibility of making different heights and shapes depending on the customer needs).

## CLAMPS

**PR11N**



**MEASURES:**

158 X 120 X 100 mm



VACUUM CNC

\*Homag, Masterwood and Felder is a registered and protected trademark. These products have been developed by Vacuum cnc specifically for machining centers of Homag, Masterwood, Felder and more.