



VACUUM BLOCK BS16

FOR NESTING OR GRID TABLES

System of Vacuum cup for grid tables, We can distinguish the model N and the model H depending on the depth of the canal.

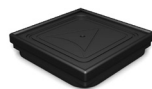
The inferior rubber is reversible, so we can double the length of its useful life.

The board lifter system (with cup CA12030P), initially thought for this model, is one of our main products: It allows you to load and unload the boards easily, with no need of external help and without having damaged or moved none the rubbers of the vacuum block.

Standard set (Base + Cup): **120 X 120 X 50 / 75 mm**

(Different heights available)

BASES



MEASURES:

120 X 120 X 20 mm

Depending on the client 's needs It can be possible placing the CA cups of 20 mm or 30 mm. The bases are distinguished by the depth of the canal:

- BS16H: 7 mm (normally for Homag, Felder, Masterwood, etc).
- BS16N: 6 mm (normally for models of table SCM, Morbidelli, etc).

CUPS



CA12030T
120 x 120 x 30



CA10030T
120 x 100 x 30



CA08030N
120 x 80 x 30



CA07030N
120 x 70 x 30



CA06030N
120 x 60 x 30



CA05030N
120 x 50 x 30



CA04030N
120 x 40 x 30



CA03530N
120 x 35 x 30



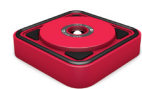
CA03030N
120 x 30 x 30



CA05030D
120 x 50 x 30



CA05030L
120 x 50 x 30



CA12030P
120 x 120 x 30



A: 120 B: 30 C: 18

*(Possibility of making different heights and shapes depending on the customer needs).





VACUUM BLOCK BS16

FOR NESTING OR GRID TABLES

System of Vacuum cup for grid tables, We can distinguish the model N and the model H depending on the depth of the canal.

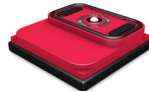
The inferior rubber is reversible, so we can double the length of its useful life.

The board lifter system (with cup CA12030P), initially thought for this model, is one of our main products: It allows you to load and unload the boards easily, with no need of external help and without having damaged or moved none the rubbers of the vacuum block.

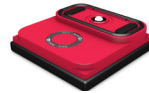
COMPACT



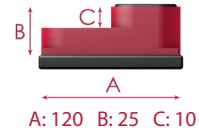
KA16-12025T
120 x 120 x 25



KA16-07025N
120 x 70 x 25



KA16-06025N
120 x 60 x 25



A: 120 B: 25 C: 10



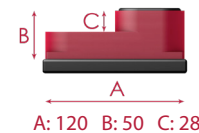
KA16-12050T
120 x 120 x 50



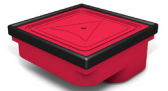
KA16-07050N
120 x 70 x 50



KA16-06050N
120 x 60 x 50



A: 120 B: 50 C: 28



Underside

ELEVATORS



EA12010N
120 x 120 x 10



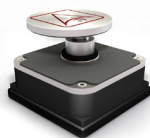
EA12020N
120 x 120 x 20



EA12030N
120 x 120 x 30

CLAMPS

PR16N



MEASURES:

120 X 120 X 50 mm

