



VACUUM BLOCK BS28

FOR SCM AND MORBIDELLI

This model can be coupled to both self-positioning and manual positioning consoles. The plastic material of which are made protects the tools of being broken in case of crash. This model takes advantage of the **Vacuum-cnc** system.

Standard set (Base + Cup): **145 X 145 X 50 / 75 mm**

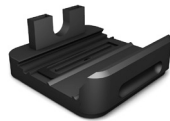
(Different heights available)

BASES

BS28N



BS28G



MEASURES:

145 X 145 X 20 mm

Alongside CC cups of 30 mm and 55 mm gives the height of the manufacturer (50 mm and 75 mm).

- BS28N Standard Base
- BS28S Base with self-positioning support

CUPS



CC14530T
145 x 145 x 30



CC10030T
145 x 100 x 30



CC08030N
145 x 80 x 30



CC07030N
145 x 70 x 30



CC06030N
145 x 60 x 30



CC05030N
145 x 50 x 30



CC04030N
145 x 40 x 30



CC03530N
145 x 35 x 30



CC14555T
145 x 145 x 55



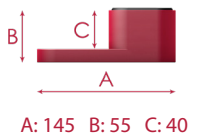
CC10055T
145 x 100 x 55



CC08055N
145 x 80 x 55



CC07055N
145 x 70 x 55



CC06055N
145 x 60 x 55



CC05055N
145 x 50 x 55



CC04055N
145 x 40 x 55



CC03555N
145 x 35 x 55

*(Possibility of making different heights and shapes depending on the customer needs).

CLAMPS

PR28N



MEASURES:

145 X 145 X 50 / 75 mm

*SCM / Morbidelli is a registered and protected trademark. These products have been developed by Vacuum cnc specifically for machining centers of SCM / Morbidelli.



VACUUM CNC