



# VACUUM BLOCK BS38

FOR SCM AND MORBIDELLI

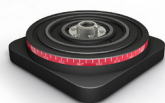
This model can be coupled to both automatic and manual positioning consoles.  
The plastic material from which they are made protects cutting tools in the event of a collision.  
This model takes advantage of all the improvements of the **Vacuum-cnc** system.

Standard set (Base + Cup): **145 X 145 X 85 / 110 mm**

(Different heights available)

## BASES

**BS38N**



**MEASURES:**

145 X 145 X 30 / 35 mm

Alongside the CC-R cups of 55 mm gives the height of the manufacturer (85 mm).

## CUPS



**CC14555TR**  
145 x 145 x 55



**CC10055TR**  
145 x 100 x 55



**CC08055R**  
145 x 80 x 55



**CC07055R**  
145 x 70 x 55



**CC06055R**  
145 x 60 x 55



**CC05055R**  
145 x 50 x 55



**CC04055R**  
145 x 40 x 55



**CC03555R**  
145 x 35 x 55



A: 145 B: 55 C: 35

\*(Possibility of making different heights and shapes depending on the customer needs).

## CLAMPS

**PR38N**



**MEASURES:**

145 X 145 X 85 mm



VACUUM CNC

\*SCM / Morbidelli is a registered and protected trademark. These products have been developed by Vacuum cnc specifically for machining centers of SCM / Morbidelli.